



## LuK Service Info



# LuK Pressure Plates with Smaller Friction Surface

## Different Diameter of the Friction Surface Compared to the Original Equipment

Manufacturer: Nissan  
Dacia

Models: QASHQAI J10  
Juke F15  
Micra 3+4  
Duster

Engines: HR16DE  
HM- H4M  
NV 200

Part no.: 122 0395 10 (previous version 220 mm)  
120 0505 10 (new version 200 mm)

See parts catalog for current assignment

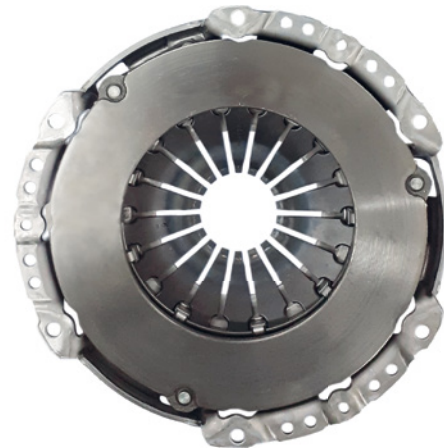


Figure 1: Pressure plate 122 0395 10 with a large friction surface diameter of 220 mm

The clutch pressure plate for the vehicle models listed above has been changed. The diameter of the friction surface has been reduced from 220 mm (figure 1) to 200 mm (figure 2). This adjustment was made possible because newly developed clutch linings are now more powerful and can transfer the same engine torque onto a smaller surface.

Optimized pressure plates have a much lower mass moment of inertia at the same torque capacity. This has a positive effect on shifting convenience and wear behavior of the gearbox.

The pressure plate housing and the mounting points remain unchanged. The pressure plates can be used without restriction on the vehicles referenced. Despite the amendments, they meet all the required technical specifications.



Figure 2: Pressure plate 120 0505 10 with a small friction surface diameter of 200 mm

Please observe the vehicle manufacturer specifications!

**You want more? We can help!**

Phone: +44 (0) 1432 264 264

Fax: +44 (0) 1432 375 760

aftermarket.uk@schaeffler.com

www.repxpert.co.uk

SCHAEFFLER  
**REP>XPERT**