



# INSTALLATION MANUAL

AS-3429

Arnett New Rear Electronic Air Shock  
Various GM SUVs (GMT K2XX, w/MagneRide)



INSTALLATION VIDEO  
(see page 3 disclaimer)  
<https://bit.ly/4rEElrQ>



Engineered to Ride, Built to Last®

# CONGRATULATIONS ON YOUR PURCHASE OF AN ARNOTT® SUSPENSION PRODUCT

WE AT ARNOTT LLC ARE PROUD TO OFFER A HIGH QUALITY PRODUCT WITH ALL THE TECHNICAL SUPPORT YOU NEED. THANK YOU FOR YOUR CONFIDENCE IN US AND OUR PRODUCT.

Proper installation is essential to experience and appreciate the benefits of this system. Please take a moment to review these installation instructions before you begin to install these components on your vehicle. The removal and installation of air suspension products should only be performed by a fully qualified and certified automotive professional.

It is equally important to be aware of all necessary safety measures while installing your new Air Suspension System. This includes proper lifting and immobilizing of the vehicle and isolation of any stored energy to prevent personal injury or property damage.

## GENERAL INFORMATION

Reading this manual signifies your agreement to the terms of the general release, waiver of liability, and hold harmless agreement, the full text of which is available at [www.arnottsuspension.com](http://www.arnottsuspension.com) and [www.arnotteurope.com](http://www.arnotteurope.com).



### WARNING:

The air suspension system is under pressure (up to 10 bar, or 150 lbf/in). Verify pressure has been relieved and disconnect power to the air suspension system prior to disassembly. Do not allow dirt or grease to enter the system. Always wear standard hand, ear, and eye protection when servicing the air suspension system.

- Not to be stored below 5°F (-15°C) and above 122°F (50°C).
- Avoid damage to air lines and cables.
- Removal and installation is only to be performed by fully qualified personnel.
- Use car manufacturer's diagnostic software.

### CAUTION:

Damage to the vehicle and air suspension system can be incurred if work is carried out in a manner other than specified in the instructions or in a different sequence.

To avoid the possibility of short circuits while working with electric components consult your owner's manual on how to disconnect your battery.

Consult your vehicle owner's manual, service manual, or car dealer for the correct jacking points on your vehicle and for additional care, safety and maintenance instructions. Under no circumstances should any work be completed underneath the vehicle if it is not adequately supported, as serious injuries and death can occur.

For vehicles with a "Closed Air Supply System," replacement of components requires proper adherence to procedures set forth within OE servicing literature. Failure to comply with the OE prescribed procedures can result in component damage and/or failure.

## DISCLAIMER:

The product shown in the installation steps below or in the installation video may look different than the part you are installing. The installation steps are the same, and all notices and warnings should be adhered to in the same manner.

## NOTE:

Always follow the manufacturer's instructions and safety protocols for deflating and inflating air suspension components.

## REAR AIR SHOCK REMOVAL

1. Set the steering to straight ahead.
2. Lift the vehicle.
3. Remove the applicable rear wheel and wheel well liner. (Figure 1)



FIGURE 1

4. Locate and carefully remove the air line from the shock by turning the metal clip approximately 90°, then pulling the air line fitting from the shock. Let it fully deflate before moving on. (Figure 2)



FIGURE 2

5. Locate and unplug the electrical connector at the top of the shock. Detach the wiring from the clip on the vehicle to free it from the shock body. (Figure 3)

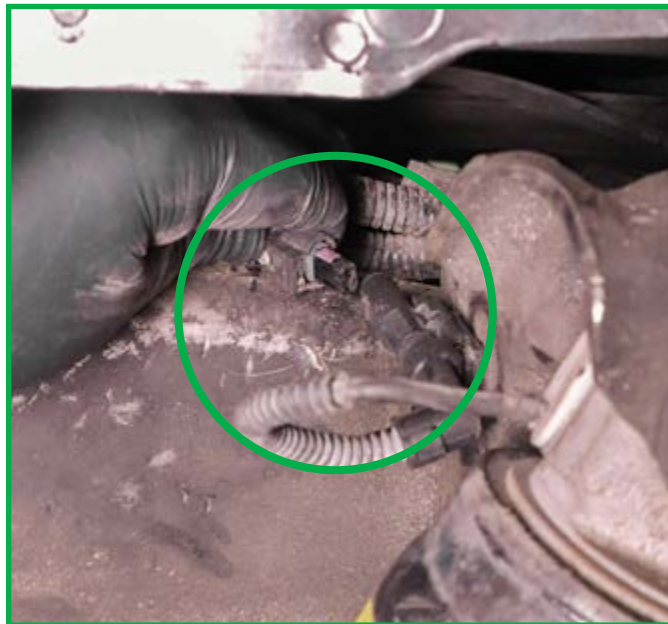


FIGURE 3

6. Loosen and remove the upper and lower shock mounting nuts. Leave the bolts in place for the moment to support the shock. (Figure 4)



FIGURE 4

7. Support the axle to relieve pressure on the shock's mounting points. Remove the upper and lower shock mounting bolts. (Figures 5, 6)



FIGURE 5



FIGURE 6

8. Remove the shock from the vehicle. (Figure 7)



FIGURE 7

9. Removal complete.

## DISCLAIMER:

The product shown in the installation steps below or in the installation video may look different than the part you are installing. The installation steps are the same, and all notices and warnings should be adhered to in the same manner.

## REAR AIR SHOCK INSTALLATION



### WARNING:

Tighten all nuts and bolts to the manufacturer's specifications during the installation process.

1. Remove the shipping cap. Position the new Arnott air shock into the vehicle, aligning the upper and lower mounting points with the brackets on the body and the axle. (Figures 8, 9)



FIGURE 8

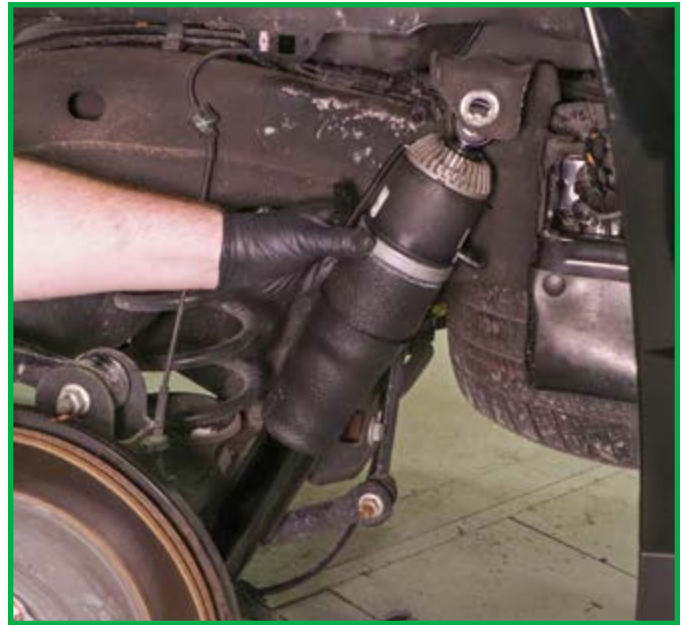


FIGURE 9

2. Install the lower and upper shock mounting bolts and nuts. (Figures 10, 11, 12, 13)

**NOTE:** Start the hardware by hand to avoid cross-threading.



FIGURE 10



FIGURE 11



FIGURE 12



FIGURE 13

3. Reconnect the electrical connector and secure the harness back into the clip on the vehicle. (Figure 14)

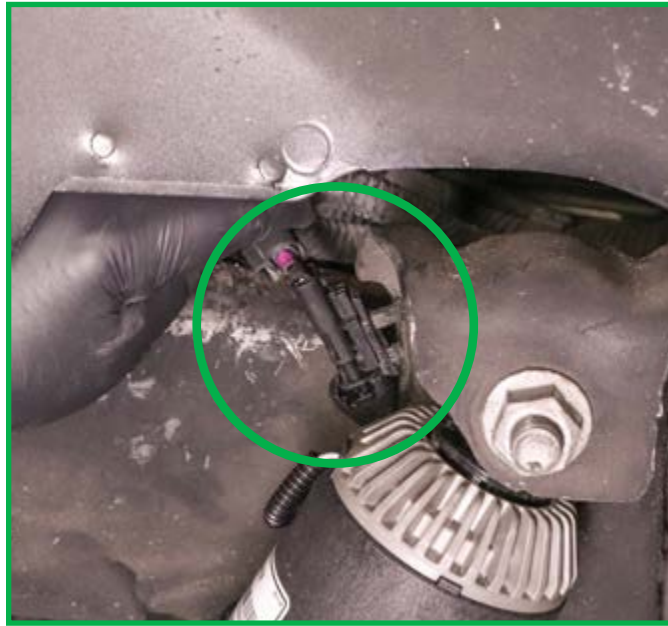


FIGURE 14

4. Install the air line connection by pushing the air line fully into the fitting and rotating the metal clip back into the locked position. (Figure 15)

**NOTE:** Ensure the connection is secure and leak-free.



FIGURE 15

5. Reinstall the wheel well liner and wheel.
6. Lower the vehicle.
7. Installation complete.

# Arnott®

## Suspension Products

### Arnott US Business Office:

[www.arnottsuspension.com](http://www.arnottsuspension.com)

100 Sea Ray Drive  
Merritt Island, FL 32953

**Call:** 800.251.8993  
321.868.3016

**Fax:** 321.868.3703

**Email:** [techassistance@arnottinc.com](mailto:techassistance@arnottinc.com)

### Arnott Europe Business Office:

[www.arnotteurope.com](http://www.arnotteurope.com)

Industrieweg 19  
5145 PD, Waalwijk (NL)

**NL Phone:** +31 73 7850 580

**DE Phone:** +31 85 2087 438

**UK Phone:** +44 203 3186 124

**BE Phone:** +32 258 846 90

**ES Phone:** +34 91 901 10 56

**FR Phone:** +32 78 48 46 93

**Email:** [info@arnotteurope.com](mailto:info@arnotteurope.com)



#### HOW HELPFUL WAS THIS MANUAL?

Scan the QR code or click the link below to let us know.

<https://bit.ly/4bQnaVj>

#### NEED IMMEDIATE SUPPORT?

We're happy to help! Reach out using the contact information above.