



## LuK Service Info



# Mounting note: LuK DMF

## Note the alignment of the markings

### Vehicle

manufacturer: Fiat  
 Mercedes  
 Nissan  
 Opel  
 Renault  
 Vauxhall

### Models:

Fiat: Talento  
 Mercedes: Vito, Vivaro  
 Nissan: NV300  
 Qashqai  
 X-Trail

### Renault:

Espace V  
 Grand Scenic III & IV  
 Megane III  
 Scenic III & IV  
 Traffic

### Article

numbers: 415 0564 10  
 415 0796 10

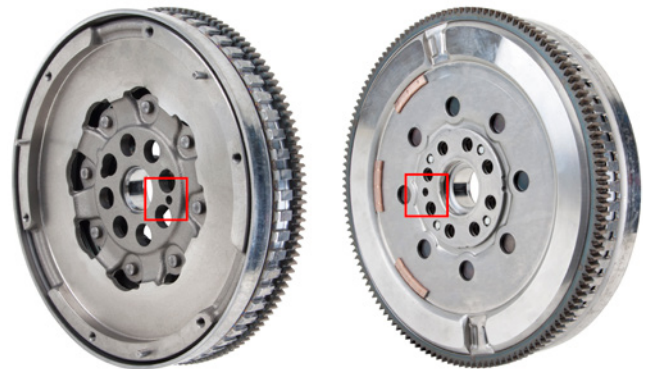


Figure 1: Reference mark on the dual mass flywheel



Figure 2: Reference mark on the crankshaft

The dual mass flywheels listed above feature sensor rings that are used by the engine control unit to detect the crankshaft position. When installing, make sure that the reference marks on the DMF (small bore, figure 1) are aligned with those on the crankshaft (bore, figure 2). If the DMF is installed in the incorrect position, it will not be possible to start the engine following the repair. To avoid deformation and subsequent vibration of the flywheel, it is necessary to install the mounting screws of the DMF in a particular sequence. First, all screws should be screwed in by hand and then hand-tightened in a crosswise sequence. Start by tightening the screw opposite the reference mark (small bore, figure 1) to the torque recommended by the manufacturer. Then, working clockwise, tighten the remaining screws to the same torque.

### Important:

New TORX PLUS® screws approved by the manufacturer must always be used. They are not included in the packaging of the DMF and must therefore be ordered separately.

Please observe the vehicle manufacturer specifications!

### You want more? We can help!

Phone: +44 (0) 1432 264 264  
 Fax: +44 (0) 1432 375 760  
[aftermarket.uk@schaeffler.com](mailto:aftermarket.uk@schaeffler.com)  
[www.repxpert.co.uk](http://www.repxpert.co.uk)