

# THE SKV GEAR SHIFT KNOBS

Aftermarket price, OE quality



PRODUCT  
GROUP

63

SKV



Find at → [www.skv.pl](http://www.skv.pl) → Car selection → All parts → Manual Transmission → **Gear Shift Lever Knob**  
ESEN company, the owner of the SKV brand.



# The SKV GEAR SHIFT KNOBS

Product benefits

## What is the role of the gear knob?

The gear shift knob is a key element of the vehicle's equipment, allowing the driver to manually control the gearbox. At the same time, it affects the aesthetics and comfort of the car interior.

Our assortment includes not only gear shift knobs but also cuffs, knobs with cuffs, and complete kits with mounting frames.



## The main features of the product are:

Our products are high-quality replacements for original parts, guaranteeing not only excellent functionality but also superb aesthetics and exceptional durability.

- Highest-quality materials:** Knobs are made of high-quality materials, guaranteeing durability.
- 3-Year Warranty:** All our gear shift knobs and cuffs are covered by a 3-year warranty. This further confirms the quality and reliability of SKV products.
- Perfect fit:** The cuffs have a perfect fit thanks to the clips that fit perfectly into the mounting holes. These guarantee precise seating, which translates into optimal functionality.
- Attention to Details:** Precise stitching and gear shift diagram emblems are the distinguishing features of SKV knobs. We pay attention to detail, which means that our products not only fulfil their purpose perfectly but also look aesthetically pleasing. It is the perfect combination of both functionality and supreme design.

## Features of our gear shift knobs:



**Completeness**  
as these are ready-to-install products



**Materials**  
of the highest quality



**Attention to detail**  
improving aesthetics and comfort of use



**Perfect Fit**  
to the car model, guaranteeing hassle-free installation



**Warranty**  
**3 YEARS**



**TecDoc ID**  
4969



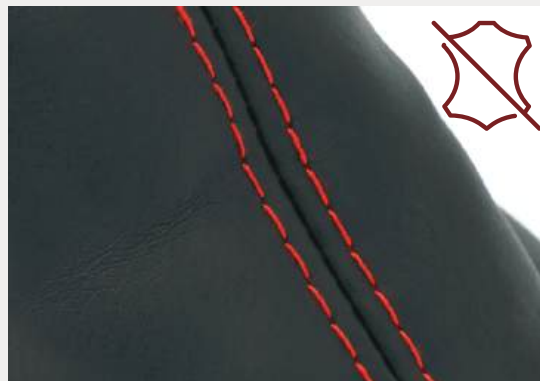
Find at → [www.skv.pl](http://www.skv.pl) → Car selection → All parts → Manual Transmission → **Gear Shift Lever Knob**

ESEN company, the owner of the SKV brand.



# The SKV GEAR SHIFT KNOBS

Detailed product description



## Product features:

- ✓ Made of high-quality materials
- ✓ Aesthetic design
- ✓ Hassle-free fitting
- ✓ Over 500 models dedicated to passenger cars and delivery vehicles
- ✓ Complete with clamps (according to each model's specifications)
- ✓ 3-year warranty



The gear shift knobs indexes of SKV start from number 001 in group 63.

## What are the 3 main reasons for replacing the gear shift knobs in our cars?

- 1 Modernizing the Vehicle Interior:** Replacing a gear shift knob is one of the most effective methods to refresh the interior of a car. A new knob can improve the aesthetics of the cockpit, which is extremely important for many drivers.
- 2 Wear, Tear and Loss of Precision:** With intensive use of the gear shift knob, natural wear & tear may occur by wearing out the seat of the mounting hole. The knob mounted on the handle begins to show play, which may lead to a loss of precision and negatively affect the comfort and smoothness of using the gear shift system.
- 3 Aesthetic Changes:** General ageing of the gear shift knobs can also affect their overall appearance. Colour change & surface matting are elements related to the natural ageing process.

group  
**63**  
SKV

Find at → [www.skv.pl](http://www.skv.pl) → Car selection → All parts → Manual Transmission → **Gear Shift Lever Knob**  
ESEN company, the owner of the SKV brand.



# The SKV GEAR SHIFT KNOBS

Structure & quality



## Knobs

are usually characterized by an ergonomic profile which guarantees a comfortable grip. Depending on the model, they are made of non-ferrous metals or plastics, and covered with pleasant-to-touch materials, such as faux leather.



## Cuffs

available in the SKV brand offer are made of materials such as faux leather, perfectly imitating natural counterparts or plastics such as PVC or polyurethane. The materials used are durable, easy to care for, and offer an aesthetic appearance.



## Frame

the finishing element of a gear shift knob cuff, in addition to its decorative function, plays an important role as an element attaching the gear shift knob cuff to the centre tunnel or the dashboard, also known as the console of the car.



## Adapters & clamps

Selected gear shift knobs come with an adapter or a mounting clamp for attaching the knob to the gear shift lever.



## What materials are the SKV gear knobs with cuffs made of?

The materials used to make the SKV gear shift knobs vary depending on the model. During the manufacturing process, each applied technological solution and crafting material was carefully selected. In the case of the SKV knobs, cuffs and gear shift frames, the use of various materials such as faux leather, non-ferrous metal alloys, aluminium, and high-grade plastics allows for an optimal combination of durability, aesthetics and functionality.



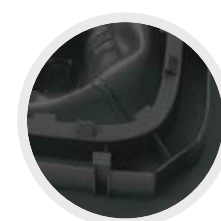
## Diversity of designs & finishes

Dostępne w różnych wariantach wykończenia: chromowane, szczotkowane, matowe lub z kolorowym akcentem.



## The fixing clamp

allows hassle-free fitting of the gear shift knob on the lever, is an element that ensures stable positioning of the knob, and is equipped with a latch or a screw mechanism to effectively hold the knob in place.



## Frame

the finishing element of a gear shift knob cuff, in addition to its decorative function, plays an important role as an element attaching the gear shift knob cuff to the centre tunnel or the dashboard, also known as the console of the car.



Find at → [www.skv.pl](http://www.skv.pl) → Car selection → All parts → Manual Transmission → **Gear Shift Lever Knob**

ESEN company, the owner of the SKV brand.





# The SKV GEAR SHIFT KNOBS

Installation / replacement procedure – step by step guide.

## An SKV brand gear shift knob.

In a few simple steps, you will be able to install your SKV shift knob fast & hassle-free.



### Step 1: Dismantling the old knob

Depending on how the knob is mounted on the gear shift lever, it can be unscrewed or removed with a bit of a pull.



### Step 2: Cleaning the gear shift lever

Thoroughly clean the lever of any loose plastic part's bits that may hinder the stable installation of a new gear shift knob.



### Step 3: Commence fitting of a new part

Prepare all the elements included in the gear shift knob kit, such as a spring or clamp, to ensure the proper functioning of the replaced part.



### Step 4: Placing the gear shift knob on the lever

Gently place the new knob, and carefully align it with the rest of the kit on the lever.



### Step 5: Screw on or press the knob onto the lever

Push or tighten the new shift knob on the lever until it is completely secured.



### Step 5: Checking the correctness of the assembly

Adjust the knob position to match the orientation of the gear shift pattern. Make sure the knob is firmly in place and there is no play.

# SKV BRAND STRENGTHS

About the SKV brand

**30k<sup>+</sup>** Over 30,000 references

**100<sup>+</sup>** Over 100 product groups



A dynamically growing brand



High stock levels with 96% availability



Quality backed by a minimum 3-year warranty



Over 500 new products monthly



Free marketing support



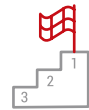
Wide range of products



Timely delivery of goods



Certified TecDoc data supplier



Leader in the domestic market



The success of the SKV brand is primarily due to the quality of its products at affordable prices. Production in the factories is systematically monitored by SKV employees.



Find at → [www.skv.pl](http://www.skv.pl) → Car selection → All parts → Manual Transmission → **Gear Shift Lever Knob**

ESSEN company, the owner of the SKV brand.





# AMONG OVER 30,000 SKV CAR PARTS YOU WILL FIND:



CONTROL ARMS  
AND SUSPENSION COMPONENTS



DRIVE  
SHAFTS



RADIATOR  
GRILLES



STEERING  
KNUCKLES



BRAKE  
HOSES



OXYGEN, EGTS,  
NOX SENSORS



INTAKE  
MANIFOLDS



AIR SUSPENSION  
SPRINGS / BAGS



SWITCHES:  
LIGHTS, WINDOWS, MIRRORS



HOSES:  
TURBO, RADIATOR, INTAKE



BRAKE  
CALIPERS



LOCK BARRELS  
/ IGNITION SWITCHES



WHEEL  
HUBS



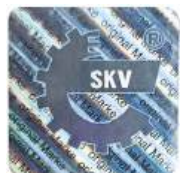
OIL  
PANS

OVER 500  
NEW ITEMS MONTHLY  
in existing  
and  
new product groups.

# Become SKV's PARTner!

SKV's diverse range is designed to maximize profitability for its customers.

Ask your distributor for more details.




- The SKV products are factory-new parts:**
- made to the same rigorous manufacturing standards as OE counterparts;
  - manufactured on the same production lines as parts from the world's leading manufacturers;
  - subjected to the same quality controls as OE parts


## SKV - Aftermarket price, OE quality




online catalogue



 Call us  
+48 790 664 970

 Send us an email  
sales@skv.pl

 Visit us  
Papiezka 69 St.  
Wloclawek, Poland

 Website  
www.skv.pl

www.skv.pl

