

166

TECHNICAL REPORT

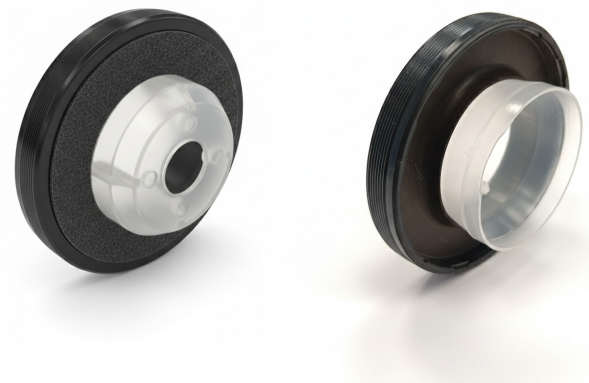
Installation of the seal with
part number 15061900



01 introduction

The Ajusa 15061900 seal is used to seal camshafts and is also compatible with crankshaft seals from certain brands.

Its structure is composed of a steel core and a PTFE Teflon body to obtain the required sealing properties. Due to its composition, this seal requires a specific installation process to obtain optimal results in each engine.



Crankshaft seal, timing side

Ford 1.8 Diesel: (1.8 D, 1.8 Di, 1.8 TD, 1.8 TDdi, 1.8 TDci)

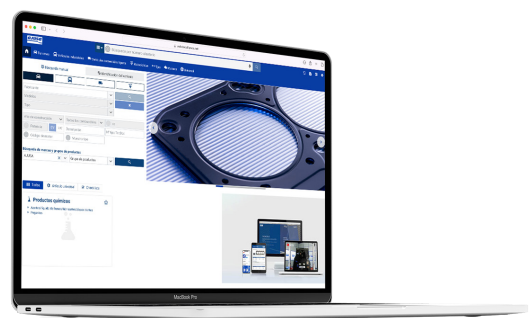
OEM: XS4Q6700, XS4Q6700AB, XS4Q6700AC, XS4Q6700AD, 1078497, 1101468, 1198045.

Chery: 1.6 Petrol , Chery group , SQR family.

OEM: E4G16-1005040

Camshaft, timing side

Opel, Vauxhall and GM 2.0 CDTi: (A20 DT_, Y20 DT_, Z20 DT_).



CATALOG

*Consult our online or printed catalogue to verify compatibility with your vehicle.

02 previous points to consider

Oil seals are highly precision-engineered components, so special care must be taken during installation to maximise service life. It's been proven that the service life of a seal is directly related to installation procedures. That's why it's important to consider the following steps:

- ✓ **Housing conditions:** it must be clean and in proper condition, free of debris and imperfections, and the shaft must be inspected to ensure that it has no damage that could cut the lip of the seal.
- ✓ **Use of sealants:** no sealant should be used on the outer diameter or in the housing.
- ✓ **Correct engine running:** crankshaft must rotate without unusual vibrations and the crankcase ventilation system (PCV) must function correctly to prevent overpressure causing leaks.

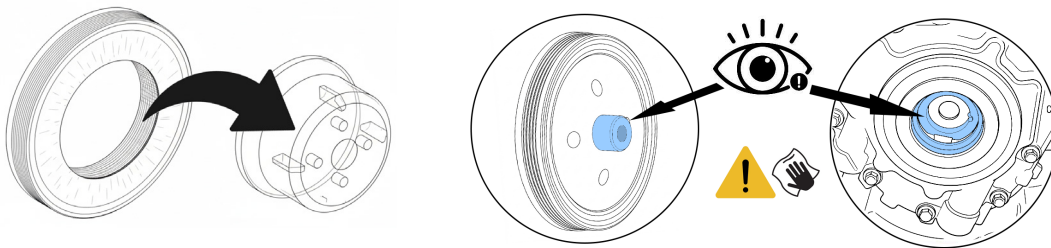
03 special features of PTFE seals

PTFE (Teflon) is a material with a very wide temperature range, superior to that of the elastomers used in seals. In addition, it offers high chemical resistance, high mechanical strength and very low wear, making it particularly suitable for seals subjected to demanding conditions.

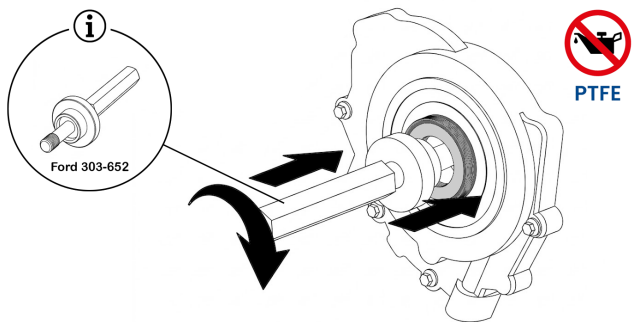
- ✓ **It is not recommended to remove the applicator on which the PTFE:** seal is fitted until it is ready to be installed in the housing, to prevent the lip from losing its sealing properties and being damaged during handling.
- ✓ Ensure that the housing and PTFE seal are dry before assembly. Unlike other oil seals, **PTFE seals should NEVER be lubricated.**
- ✓ Wait at least four hours after installing the seal before starting the engine to allow the seal to fully adapt to its housing.

03 assembly | crankshaft application

01 | After cleaning the housing and shaft, leaving it free of contaminants and residues, remove the applicator from the seal. In this case, the shaft will come in from the external part of the engine and the applicator's function will be reduced to simply maintaining the correct shape of the lip in the packaging.



02 | After that, carefully insert the seal without lubricating its housing. Using the appropriate tool (Ford 303-652), insert the seal as far as the tool will allow



03 | Next, without lubricating the lip, insert the pulley and screw carefully, taking care not to damage the lip. Use the screw to help align the parts. Tighten the screw to the following torque value:

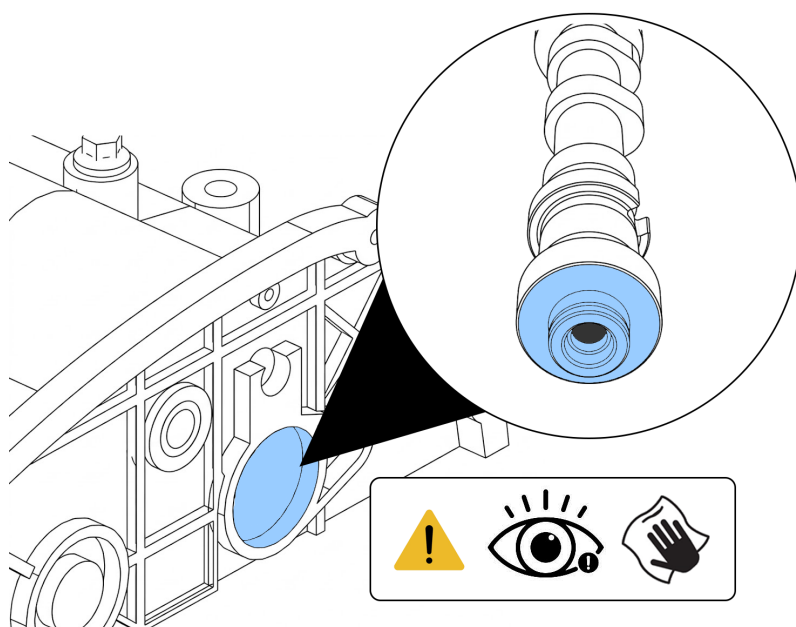
- a) 1.8 D, 1.8 TD, 1.8 TDdi : 90 Nm + 90°
- b) 1.8 TDci: 100 Nm + 180°

Replace the screw during each repair, as it could cause leaks.

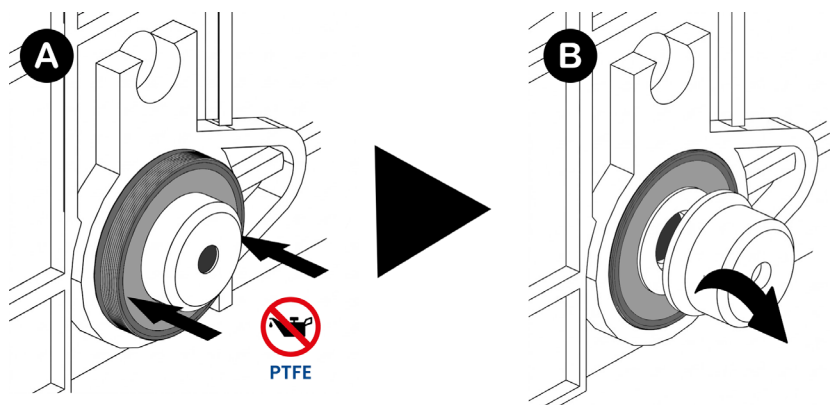
Wait 4 hours before starting the engine to allow the Teflon lip to seat properly.

04 assembly | camshaft application

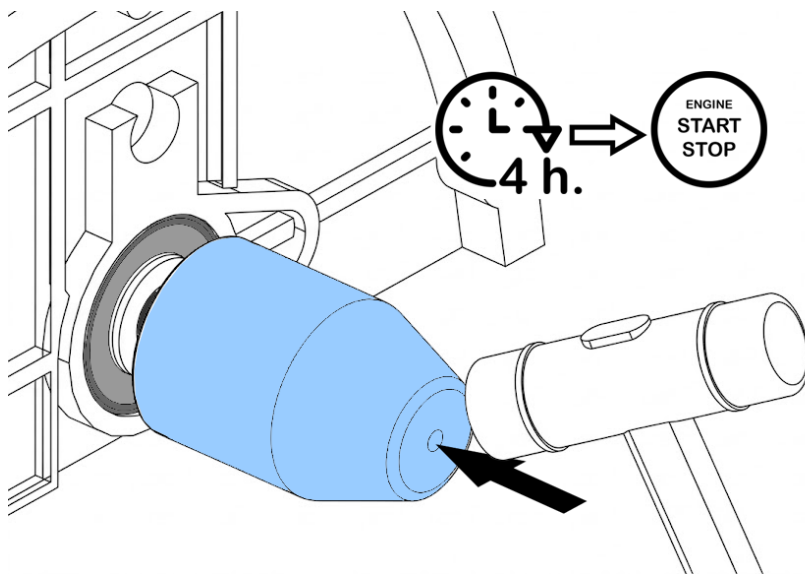
01 | Clean shaft and housing, making sure there's no residue, grease, or oil left. Also, check the condition of the housing and shaft, making sure there are no dents or bumps.



02 | Approximate seal on the shaft face without removing the applicator (A). Do not use oil to lubricate the shaft. Push softly until the seal is released from the applicator to the shaft (B).



03 | Using the appropriate tool (D2 = 50 mm / D1 = 30 mm), push the seal into the bottom of the housing. Wait 4 hours before starting the engine to allow the seal lip to seat properly.



Do you have any questions about the assembly or any of the steps? Contact our technical support department before installation and we will advise you and guide you through the process.



customerservice@ajusa.es



+34 967 216 212