

IMPORTANT INFORMATION: PSA DV5 ENGINE TIMING CHAIN REPAIRS

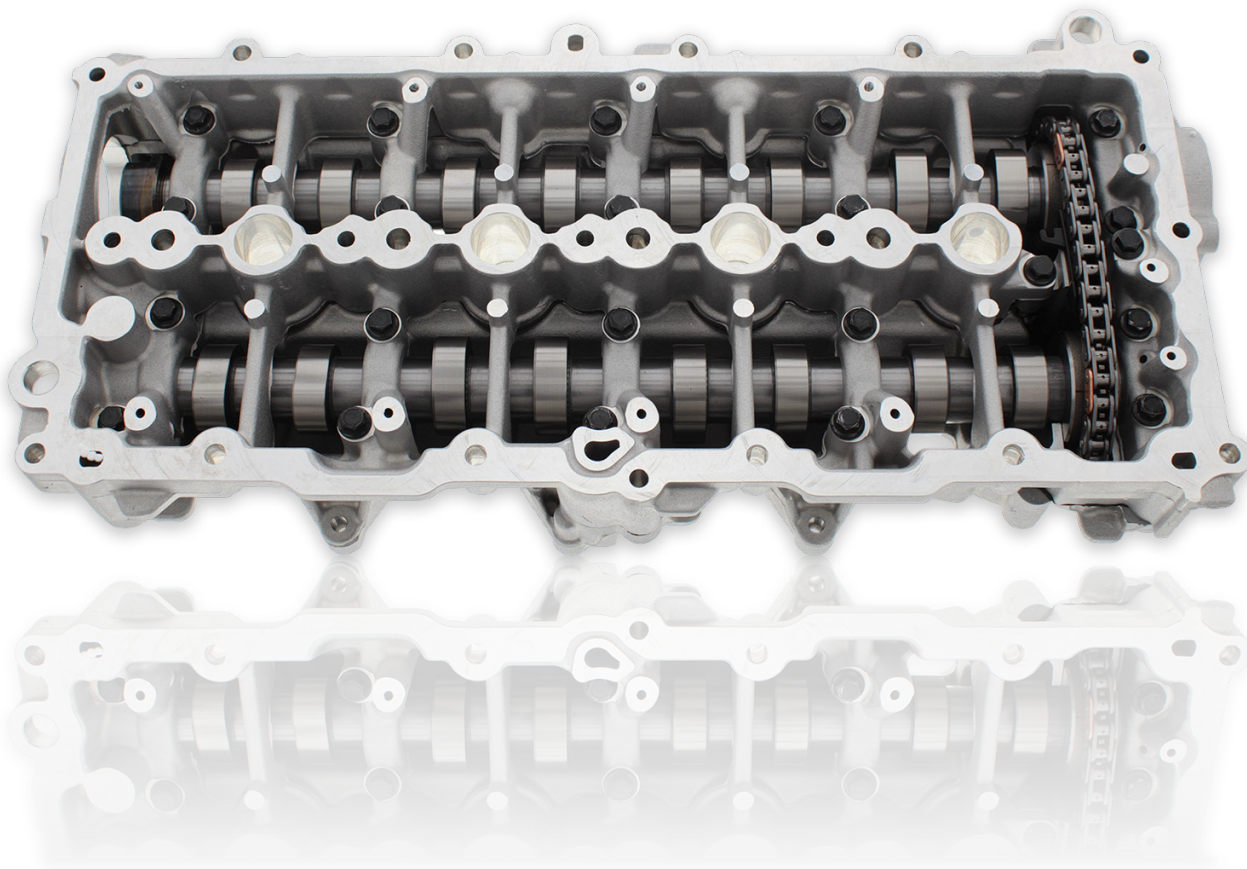
Choosing the Right Long-Term Repair Solution

On PSA DV5 series engines, the original 7mm timing chain (TCK402) design has been identified as a known weak point. While repairs using the original specification components may restore operation in the short term, they do not address the underlying cause of the issue and can leave the engine at risk of further damage in the future.

For this reason, we no longer recommend repairs using the original 7mm timing chain components.

Our Recommended Solution: 8mm Chain Upgrade (CSK1014A)

To ensure long-term reliability and peace of mind, we strongly recommend the CSK1014A timing chain conversion kit, which upgrades the engine to a more robust 8mm chain system.



Although this option has a higher initial cost than a standard repair, it provides significant benefits:

- Corrects the original design weakness
- Offers improved durability and engine protection
 - Reduces the risk of repeat repairs
- Helps avoid costly future engine damage
 - Delivers better long-term value

For more information, email technical@faiauto.com



TECHNICAL BULLETIN 0100

TIMING CHAIN KIT: DV5 CHAIN UPGRADE

IMPORTANT INFORMATION: PSA DV5 ENGINE TIMING CHAIN REPAIRS

This upgrade is the most effective way to protect your vehicle and ensure dependable performance over time.

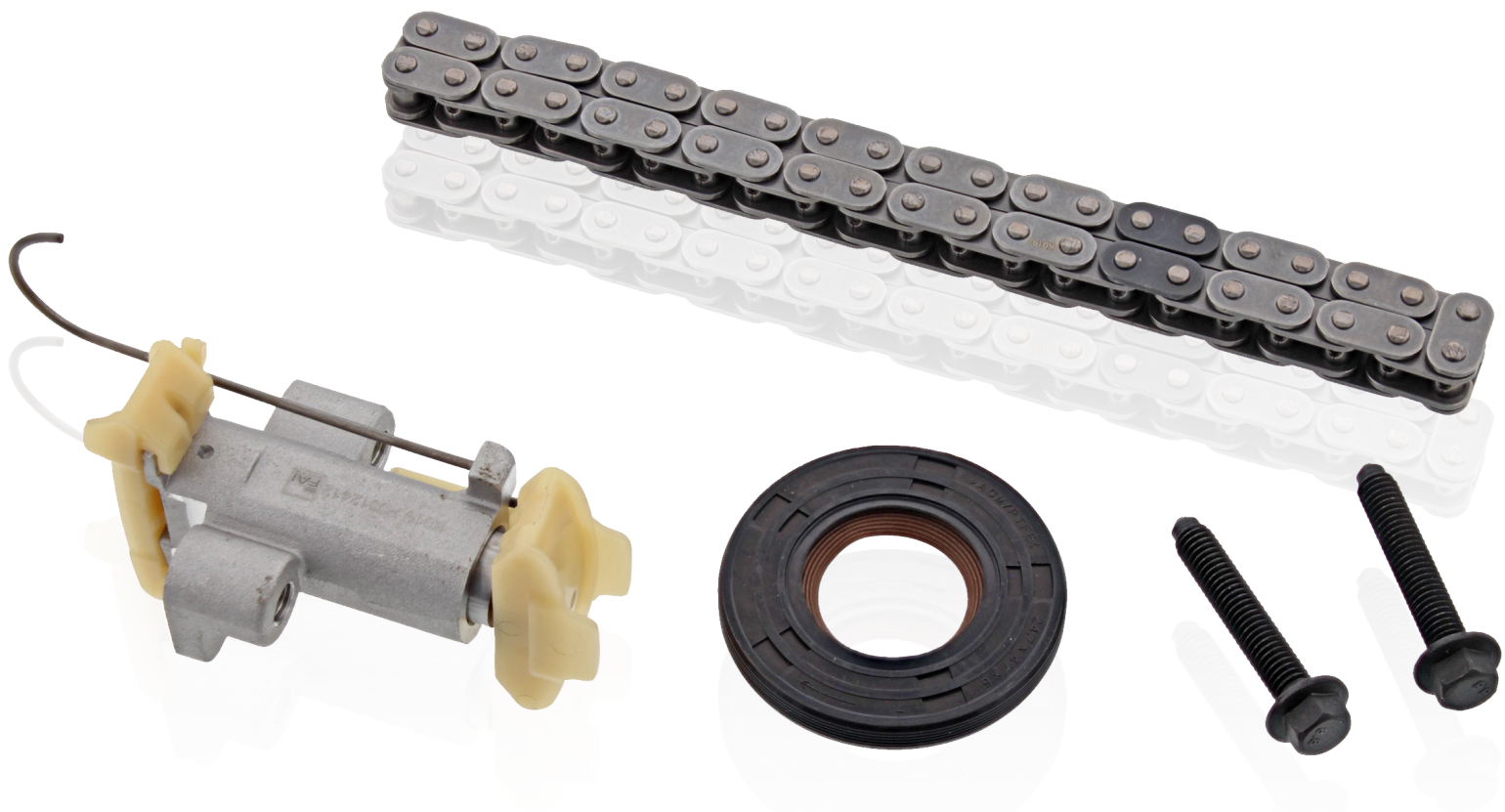
Vehicles Already Converted

If your vehicle has already been upgraded to the 8mm timing chain system (TCK487), suitable service and maintenance kits remain available to support ongoing repairs as required.

Our Commitment to Quality

Our recommendations are based on long-term performance, reliability, and customer satisfaction. We believe in offering solutions that fix problems properly, not ones that simply postpone them

If you would like more information or advice on the best option for your vehicle, please speak to our technical or service team, who will be happy to help.



For more information, email technical@faiauto.com

faiauto.com

TB0100

f in X



TECHNICAL BULLETIN 0100

TIMING CHAIN KIT: DV5 CHAIN UPGRADE

IMPORTANT INFORMATION: PSA DV5 ENGINE TIMING CHAIN REPAIRS

Frequently Asked Questions

Why can't I just replace the timing chain with the original 7mm version?

Repairs using the original 7mm components do not resolve the known design weakness of the system. While the engine may run correctly for a time, there is a higher risk of future chain issues, which can lead to serious and costly engine damage.

Is the 8mm conversion really necessary?

The 8mm conversion is not mandatory, but it is strongly recommended as the most reliable and long-term solution. It is designed to eliminate the original weakness and significantly reduce the likelihood of repeat repairs.

Why does the 8mm upgrade cost more?

The upgrade uses a more robust chain system and additional components, which increases the initial cost. However, it can help avoid repeat repairs, unexpected breakdowns, and major engine damage – often making it more cost-effective in the long run.

Will the 8mm timing chain affect how my engine runs?

No. The conversion is designed specifically for PSA DV5 engines and maintains correct engine timing and performance, while improving durability and reliability.

What if my engine has already been converted to an 8mm chain?

If your vehicle already has the 8mm timing chain system installed, compatible service and repair kits remain available to support future maintenance if required.

Is this recommendation based on real-world experience?

Yes. Our recommendations are based on known design characteristics, technical assessment, and long-term reliability considerations. The aim is always to provide repairs that fix the problem properly, rather than short-term solutions.