

Identify the correct kit for your customer

Due to incomplete OE data, there is no way to accurately identify if the Tsubaki or Borg Warner timing system was fitted on the engine assembly line.

Therefore, it is necessary for the installer to confirm which system is required for their repair.

Please use the images below to identify the correct FAI kit to order/install.

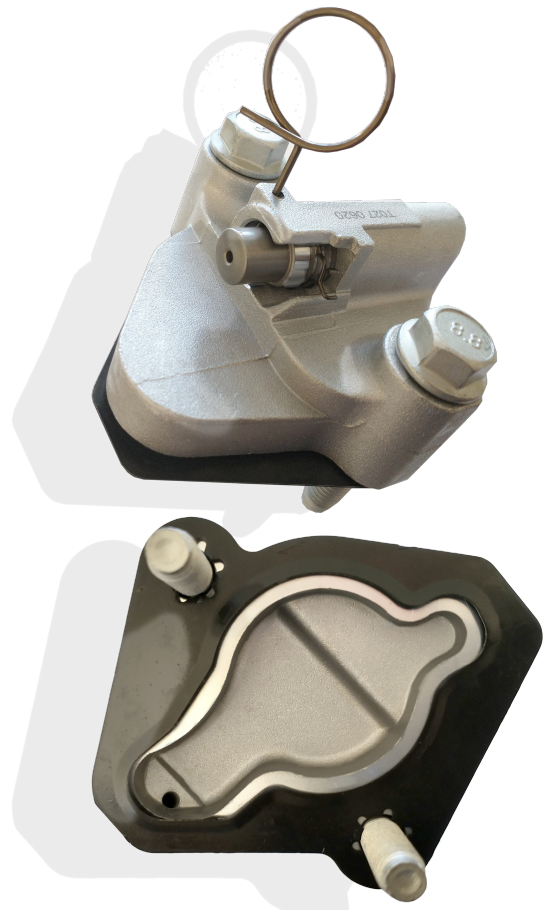
Tsubaki design with standard nonreturn ratchet design & central oil feed hole in chamber.

Borg Warner design with “screw thread type” non-return mechanism & oil feed offset in oil chamber.

TCK336 Variants



TCK346 Variants



FAI products are designed for use in standard, unmodified vehicles and are not intended for custom or altered applications. All components must be installed by a qualified technician.

Please note: FAI products are supplied without fitting instructions.

For more information, email technical@faiauto.com

faiauto.com