

### loss of power or boost pressure error, exhaust-side foreign body damage due to defective tumble valves

#### Introduction:

In the case of power loss or fault memory entries concerning the boost pressure upper limits or lower limits, the free movement of the VTG unit must be checked first.

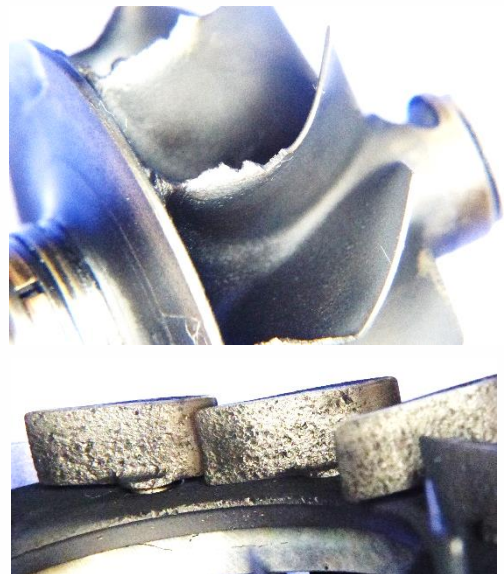
#### Note:

If a stiffness of the VTG unit due to massive dislocation of the internal components due to excessive exhaust gas back pressure is ruled out, then expect an exhaust-side foreign body damage. This is often based on defective tumble valve system in the intake manifold. Break off components are dragged through the combustion chamber and destroy the gas inlet edges of the turbine wheel and mechanical components of the VTG unit.

#### Instructions:

The intake manifold must be replaced if damaged bearings of the tumble valves or in the absence of tumble valves.

For these engines, we recommend to renew the oil inlet and oil return lines of the turbocharger. It is often noted that there is overheated bearings of the rotor shaft and lack of lubrication damage.



**Vehicle Manufacturer:** Opel, Vauxhall

**Vehicle:** Astra J, Zafira C, Insigna 2.0 CDTi

**Engine code:** A 20 DTC, A 20 DTJ, A 20 DTH, Y 20 DTJ, Z 20 DTJ

**Validity:** This service information is valid for renewing the turbocharger with

**BTS reference:** T914831      **BTS-Service-Set-Nr:** T81422

Please note: OE-references are only for means of comparison. The content of this Service Information is non-binding and is only for informational purposes. The manufacturer specifications have to be adhered to.