

MCK0150

**[KIT CATENA DISTRIBUZIONE MCK0150 E MCK0152](#)**

Nuovo pattino

**[TIMING CHAIN KIT MCK0150 AND MCK0152](#)**

New pad

**[STUERKETTENSÄTZE MCK0150 UND MCK0152](#)**

Neue Klemme

**[KIT CHAÎNE DE DISTRIBUTION MCK0152 ET MCK0152](#)**

Nouveau patin

**[KIT DE DISTRIBUCIÓN CON CADENA MCK0150 I MCK0152](#)**

Nueva guía

**[TRIGER ZINCIRI KITI MCK0150 VE MCK0152](#)**

Yeni ped

**MAGNETI
MARELLI**

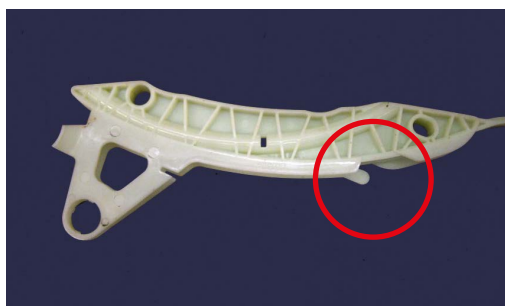
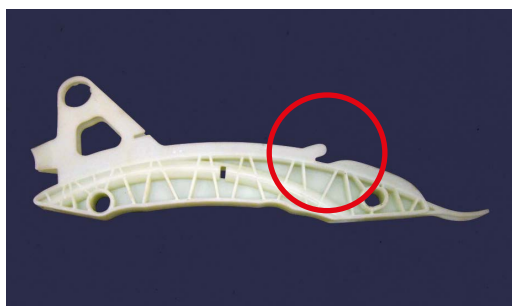
PARTS & SERVICES

Kit Catena distribuzione MCK0150 e MCK0152

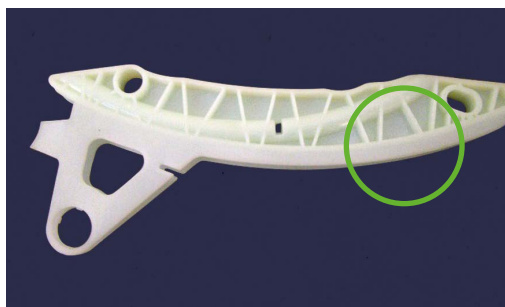
NUOVO PATTINO

All'interno dei due kit sopra citati è stato inserito un **nuovo pattino** che differisce dal precedente per la forma (è stata eliminata una sporgenza), in questo modo la sponda risulta allungata.

Precedente versione

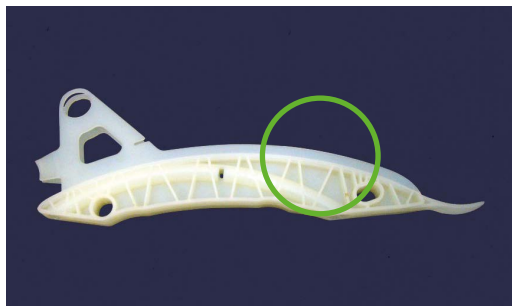


Nuova versione fornita



Tale modifica migliorativa si è resa necessaria in quanto introdotta dal produttore (vedi foto).

Campione OE



Le due versioni sono equivalenti ed intercambiabili.

Le istruzioni, le raccomandazioni e le informazioni contenute nella presente pubblicazione sono state formulate con la massima cura. Marelli Aftermarket Italy S.p.A., in nome e per conto delle sue affiliate/consociate, non assume responsabilità per alcun tipo di danno anche derivante da errata interpretazione delle informazioni ivi contenute.



**MAGNETI
MARELLI**

PARTS & SERVICES

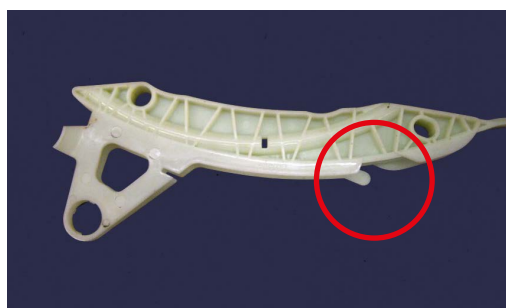
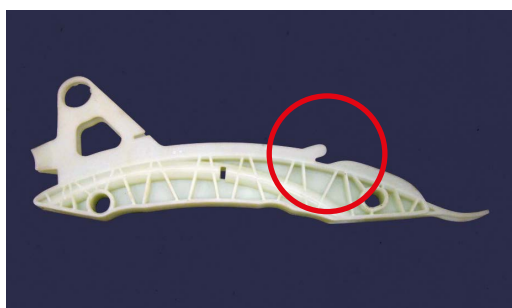
Timing chain kit MCK0150 and MCK0152

NEW PAD

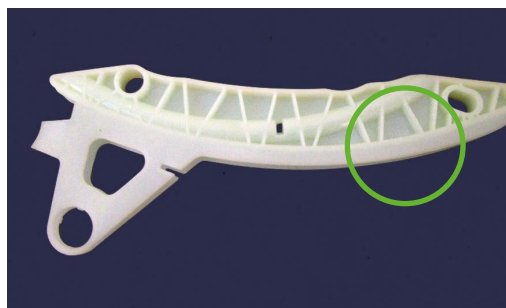
Inside the afore-mentioned kits a **new pad** has been placed.

The new version presents a different shape if compared with the previous one, so the side is elongated.

Previous version

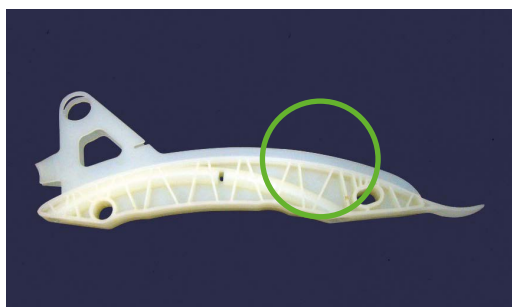


New supplied version



The ameliorative modification follows what has been done by OE producer.

OE sample



The two versions are equivalent and interchangeable.

The instructions, the recommendations and the information contained in this publication have been prepared with the utmost attention. Marelli Aftermarket Italy S.p.A., in the name and on behalf of its affiliates/subsidiaries, does not assume responsibility for any type of damage even deriving from incorrect interpretation of the information therein contained.

**MAGNETI
MARELLI**

PARTS & SERVICES

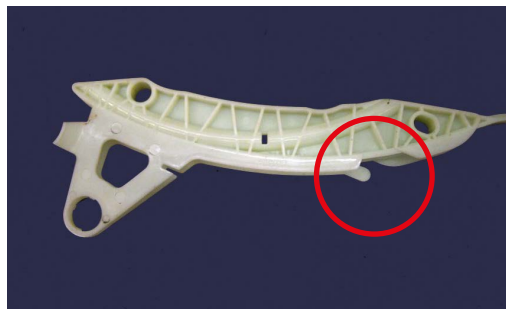
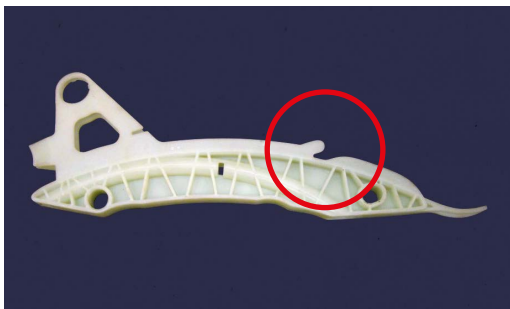
Steuerkettensätze MCK0150 und MCK0152

NEUE KLEMME

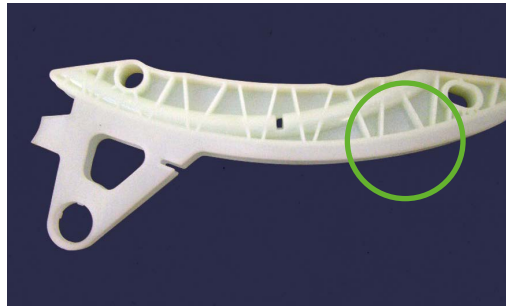
Im Inneren der oben genannten Bausätze wurde ein **neue Klemme** platziert.

Die neue Version hat eine andere Form als die vorherige, konkret bedeutet dies, die Seite ist nun länglich.

Vorgänger

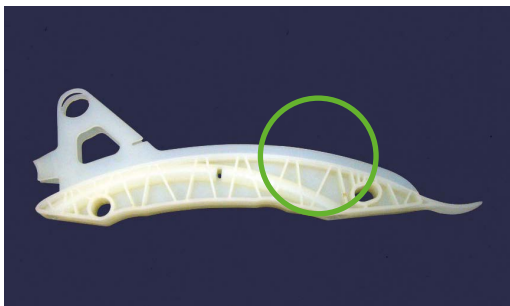


Nachfolger



Diese Modifikation folgt dem Beispiel der OEMs.

Beispiel OEM



Die beiden Versionen sind gleichwertig und untereinander austauschbar.

Die in dieser Publikation enthaltenen Anweisungen, Empfehlungen und Informationen wurden mit größter Sorgfalt erstellt. Marelli Aftermarket Italy S.p.A. übernimmt im Namen und im Auftrag ihrer Tochtergesellschaften keine Verantwortung für Schäden jeglicher Art, die sich auch aus einer falschen Auslegung der darin enthaltenen Informationen ergeben.

**MAGNETI
MARELLI**

PARTS & SERVICES

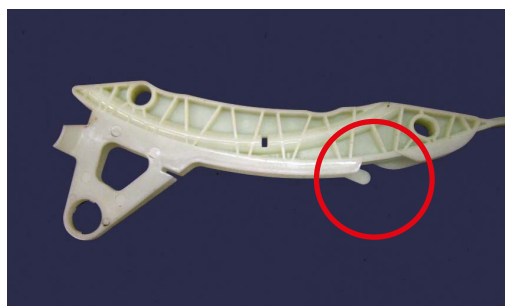
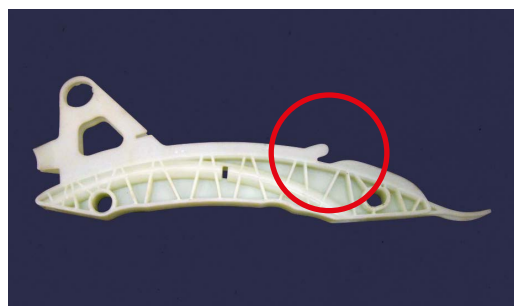
Kit chaîne de distribution MCK0152 et MCK0152

NOUVEAU PATIN

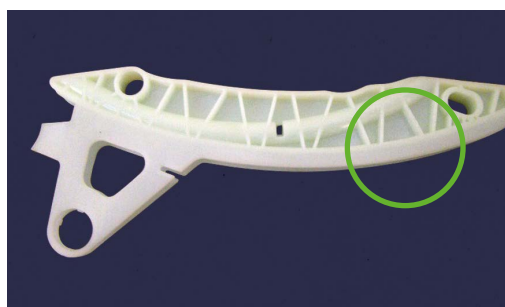
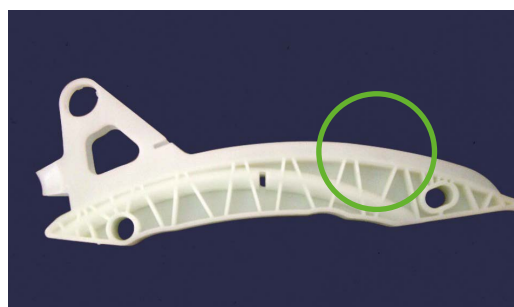
Un **nouveau patin** a été ajouté dans les kits mentionnés ci-dessus.

La nouvelle version présente une forme différente par rapport à de la précédente, afin que le côté soit plus allongé.

Version précédente



Nouvelle version fournie



Cette modification améliorative correspond au changement effectué par le constructeur sur le produit d'origine.

Échantillon OE



Les deux versions sont équivalentes et interchangeables.

Les instructions, les recommandations et les informations contenues dans cette publication ont été préparées avec la plus grande attention. Marelli Aftermarket Italy S.p.A., au nom et pour le compte de ses filiales, n'assume aucune responsabilité pour tout type de dommage, même dérivant d'une mauvaise interprétation des informations qui y sont contenues.

**MAGNETI
MARELLI**

PARTS & SERVICES

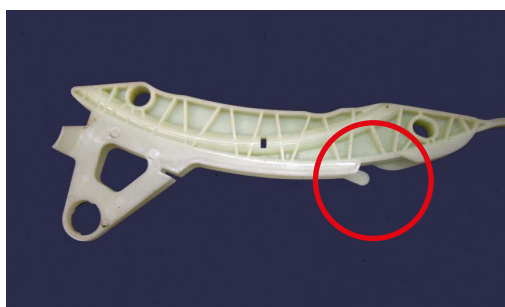
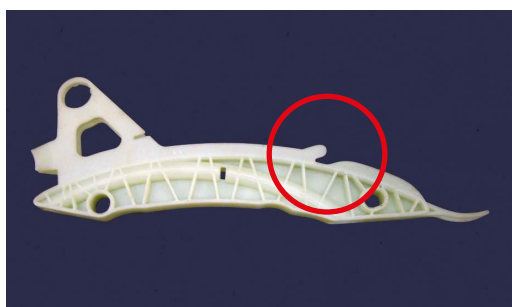
Kit de distribución con cadena MCK0150 i MCK0152

NUEVA GUÍA

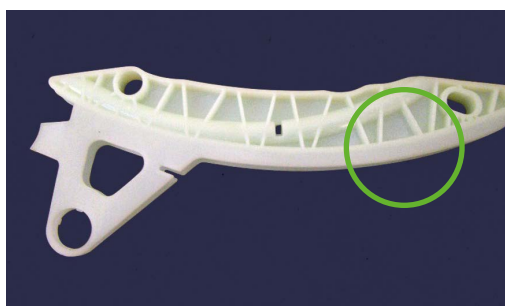
Dentro de los kits antes mencionados se ha añadido una **nueva guía**.

La nueva versión tiene una forma diferente a la anterior, con el lateral alargado.

Versión anterior

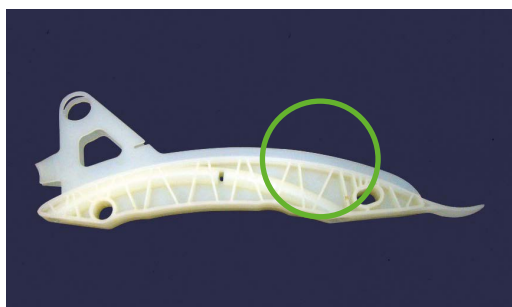


Nueva versión suministrada



La modificación de mejora sigue a la producida por el constructor OE.

Muestra OE



Las dos versiones son equivalentes e intercambiables.

Las instrucciones, recomendaciones e información contenidos en esta publicación han sido preparadas con la mayor atención. Marelli Aftermarket Italy S.p.A., en su propio nombre y en el de sus filiales / subsidiarias, no asume responsabilidad por ningún tipo de daño, incluso derivado de una interpretación incorrecta de la información aquí contenida.



**MAGNETI
MARELLI**

PARTS & SERVICES

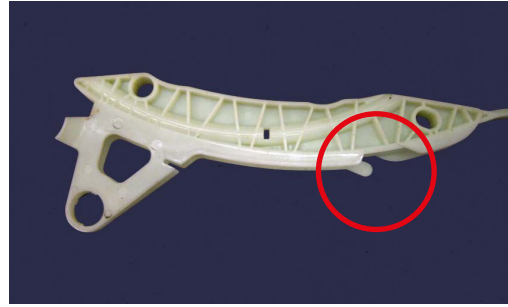
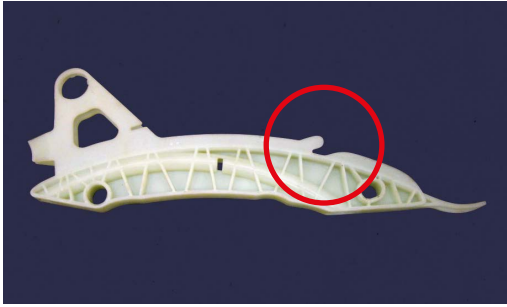
Triger zinciri kiti MCK0150 ve MCK0152

YENİ PED

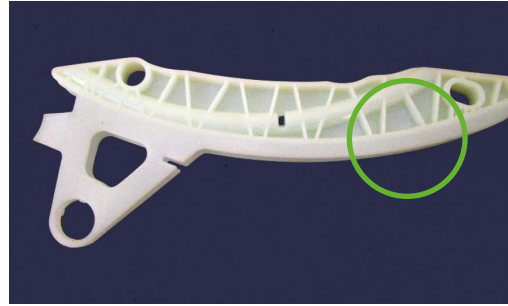
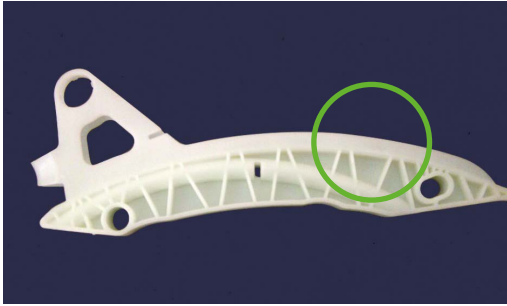
Yukarıda bahsedilen kitlerin içine **yeni bir ped** yerleştirilmiştir.

Yeni versiyonun, bir öncekine kıyasla farklı bir şekli vardır, yan tarafı uzatılmıştır.

Önceki versiyon

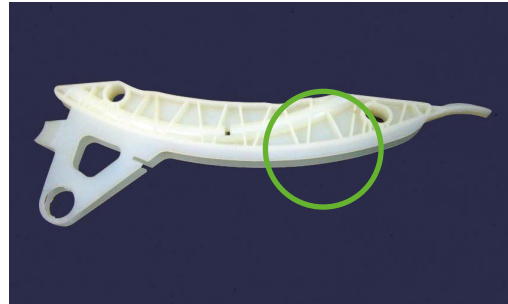
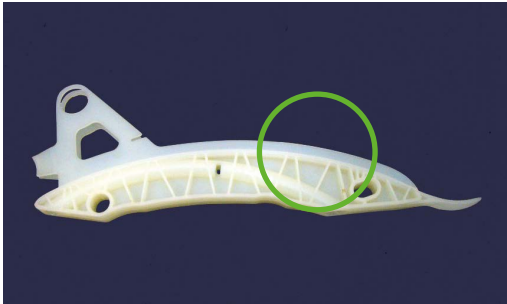


Verilen yeni versiyon



Düzeltilici modifikasyon, OE üreticisi tarafından yapılan işlemlerle uyumludur.

OE örneği



İki versiyon eşdeğerdir ve birbirleriyle değiştirilebilir.

Bu yayında yer alan talimatlar, tavsiyeler ve bilgiler büyük bir titizlikle hazırlanmıştır. Marelli Aftermarket Italy S.p.A., bağlı şirketleri/yan kuruluşları adına ve namına, burada yer alan bilgilerin yanlış yorumlanmasından kaynaklanan hasarlardan dolayı herhangi bir sorumluluk kabul etmez.