

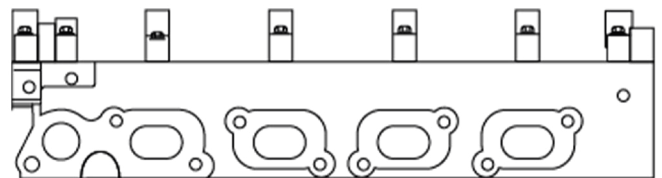
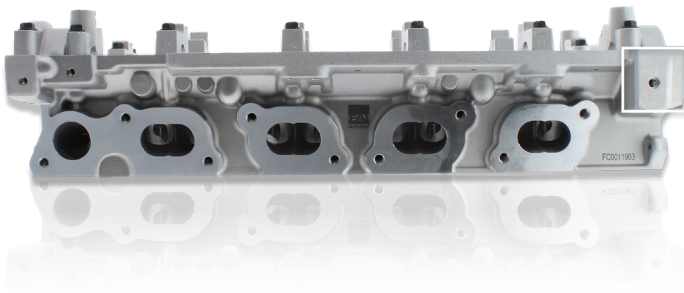
HOW TO IDENTIFY THE DIFFERENCE BETWEEN BCH090 AND BCH091 CYLINDER HEADS.

There are distinct features that set **BCH090** and **BCH091** apart.

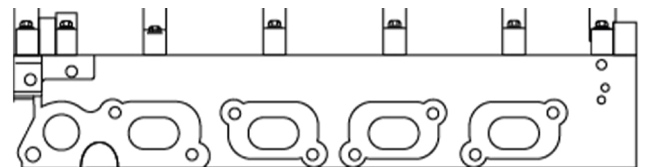
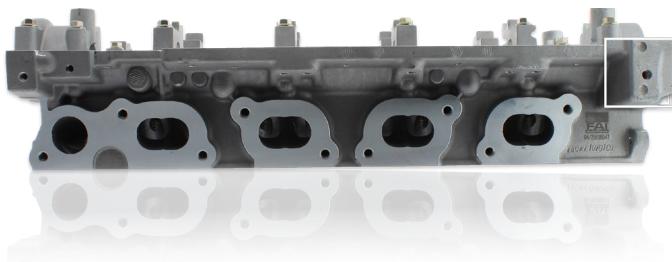
It is essential to verify the correct component before placing an order.

For full application coverage and technical information, visit: faiauto.com/ecat

BCH090



BCH091



FAI products are designed for use in standard, unmodified vehicles and are not intended for custom or altered applications. All components must be installed by a qualified technician.

Please note: FAI products are supplied without fitting instructions.

For more information, email technical@faiauto.com

faiauto.com