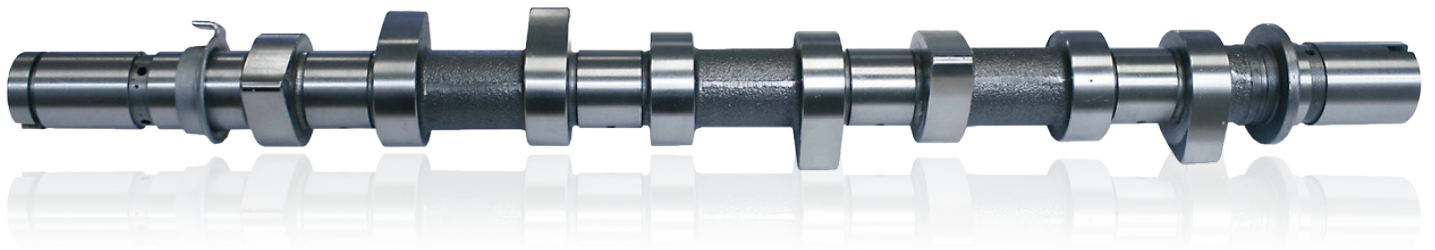


The thread size on our C331 is M10 x 1.25 which matches current OE specification and in most engines, the camshaft pulley will be secured with a stud and nut to suit.

In some cases however, it may be found that the original camshaft coming off the vehicle utilises a bolt to secure the camshaft pulley which subsequently has a different thread pitch (M10 x 1.00).



In such cases, the stud and nut must be purchased from Renault, part numbers in the table opposite.

This applies whether fitting to Renault, Nissan or Dacia.

Application for C331	OE REFERENCE
Stud - Renault	8200778847
Nut - Renault	8200793248