



**SI 0079**  
For technical personnel only!  
1/4

# SERVICE INFORMATION

## AIR MASS SENSORS (ANALOGUE)

### FAULTS, DAMAGE AND INSPECTION

#### APPLICATIONS

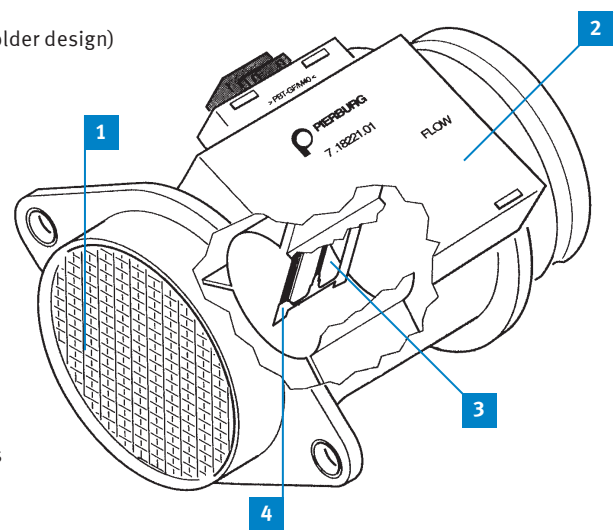
The air mass sensor precisely measures the air mass that flows into the engine ("mass air flow").

The signal from the air mass sensor is used to calculate the injected fuel quantity. In diesel engines, it also controls the exhaust gas recirculation. It is an important component in air supply and helps reduce exhaust gas. A defective or contaminated air mass sensor can convey incorrect input signals to the engine control unit, which then incorrectly operates other components. In turbo-diesel engines in particular, the stress on the air mass sensor is often so great that both air flow and air velocity are very high.

#### FUNCTION DESCRIPTION

The complete air mass sensor consists of a flow passage (tube), in which the intake air flows past the sensor unit itself.

Hot-film air mass sensor (older design)



- 01 Flow rectifier
- 02 Electronic components
- 03 Hot-film sensor
- 04 Temperature sensor

Hot-film air mass sensor (newer design, cutaway view)



- 01 Sensors
- 02 Electronic components

All content including pictures and diagrams is subject to change. For assignment and replacement, refer to the current catalogues or systems based on TecAlliance.  
\* The reference numbers given are for comparison purposes only and must not be used on invoices to the consumer.



## SI 0079

For technical personnel only!  
2/4

### NOTE

Depending on application and vehicle, the air mass sensor is available as a single plug-in module, or fully integrated in a plastic tube. Both versions – with or without tube – are referred to as air mass sensors.

Older models have a hot-wire sensor element. Any contaminations on the hot-wire are burnt off by briefly heating it up after switching off the engine.

Newer models work with a film-like heating resistor on a mount. There is no burning-off process here.

This hot-film sensor is heated to a constant temperature of approx. 120 – 180 °C above the intake air temperature (depending on vehicle manufacturer). The air cools the hot-film sensor as it flows in. The control electronics counter-balance this cooling by means of a heating current. This heating current is the measurement for the inflowing air mass. This method takes account of the density of the inflowing air. Pulsations and return flows can also be detected in newer designs with two separate measurement bridges.

### FAULTS AND POSSIBLE CAUSES

Defective or contaminated air mass sensors can convey incorrect signals.

This can lead to:

- black smoke
- lack of power
- limp home function

### POTENTIAL DAMAGE

#### CAUSES ARE:

Leakages in the intake air system can allow dirt particles to enter with the intake air. These then hit the air mass sensor at high speed and destroy the delicate sensor element.

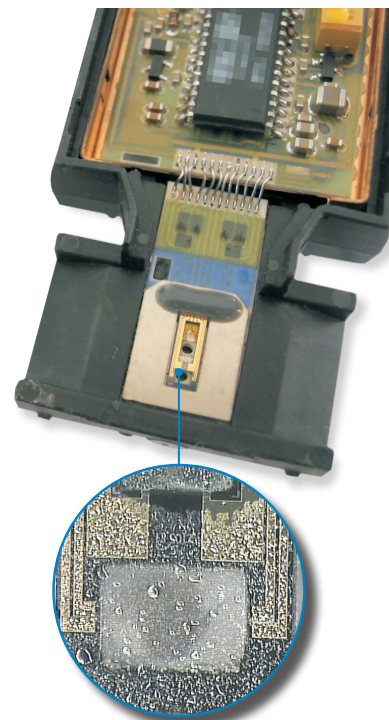
- Excess oil mist from the crankcase ventilation can oil up the sensor.
- Servicing errors, such as a dirty working environment when changing the air filter or using incorrect or poor-quality air filters, can also lead to dirt intake and damage to the air mass sensor.
- Splash water, such as during heavy rain, can enter the clean air side via the air filter and damage or contaminate the sensor. Salt water, such as from road salt and slush, increases this effect.
- Oil particles from oil-wetted sports air filters can damage or contaminate the sensor.

There are plenty of other factors that can cause an undamaged air mass sensor to provide incorrect signals:

- defective exhaust gas recirculation valves
- defective tank ventilation valves
- leakages in the intake air system
- blocked air filter
- damaged turbocharger (e.g. incorrectly calibrated wastegate)



Blocked air mass sensor



Oil mist on hot-film sensor



## SI 0079

For technical personnel only!  
3/4

### AIR MASS SENSORS AND ON-BOARD DIAGNOSTICS (OBD)



Air mass sensors are monitored by the on-board diagnostics (OBD). Potential diagnostic trouble codes here can be:

P0100	Malfunction in the air mass or air flow meter circuit
P0101	Problem with the measuring range or power of the air mass or air flow meter circuit
P0102	Air mass or air flow meter circuit too small
P0103	Air mass or air flow meter circuit too large
P0104	Misfire in the air mass or air flow meter circuit



Incorrect input signals from a defective air mass sensor can cause the engine control unit to incorrectly actuate other components. Any error messages that arise may therefore be a result of a defective air mass sensor.

P0171	Mixture control (bank 1) system too lean
P0172	Mixture control (bank 1) system too rich
⋮	⋮
P0175	Mixture control (bank 2) system too rich
P0401	EGR system – insufficient flow rate
P0402	EGR system – excessive flow rate

### SPORADIC FAULTS

Not every fault detected by the OBD leads directly to a malfunction indicator lamp illuminating.

If a fault is detected in a driving cycle that influences the exhaust gas, it is saved as a “non-debounced” fault, meaning that the malfunction indicator lamp does not illuminate.

The lamp only illuminates when the same fault occurs again during the next drive cycle or within a certain period. The fault is then designated as “debounced” (confirmed) and is saved as an OBD fault. Alongside the fault itself, other operating data and environmental conditions from the time of the fault are also collected and saved (“freeze frames”).

The malfunction indicator lamp can go out again if the fault does not reoccur within a certain period.

The data can be accessed using an engine tester or scan tool via the diagnostic socket in the vehicle:

- confirmed (debounced) faults in Mode 3
- sporadic faults in Mode 7
- operating data (“freeze frames”) in which a fault occurred in Mode 2

Even if the OBD indicates a sporadic fault on the air mass sensor, it does not necessarily mean that the sensor is defective.

Moisture, oil mist or dirt often falsify the measuring results, which the OBD then interprets as an error.

These sporadic faults can be caused by the aforementioned factors.

For this reason, it is advisable to check these before fitting a new air mass sensor.



## SI 0079

For technical personnel only!  
4/4

### CHECKING ANALOGUE AIR MASS SENSORS

When diagnosing faults, begin by reading the diagnostic trouble code with an engine tester or scan tool.

#### PLEASE NOTE:

Although the OBD can detect a faulty part or function, it cannot determine the cause. Electrical faults in the wiring harness or in the component itself are usually saved as faults. They must be investigated using suitable test devices.

There are various ways to inspect the air mass sensor:

#### CHECKING THE VOLTAGE SUPPLY

- Disconnect the plug from the air mass sensor.
- Turn on the ignition.
- Measure the voltage at the plug.



#### NOTE

The following voltages must be present (see plug assignment diagram):

- between pin 2 and vehicle ground: 12 volts (on-board voltage)
- between pin 4 and pin 3: 5 volts (sensor voltage)

If these values are not reached, all affected lines and plugs must be checked for short circuits, interruption and transition resistances.



#### NOTE

A voltmeter or oscilloscope can also be used for inspection.



Plug assignment

- 1 TF (option)
- 2 On-board voltage UBat
- 3 Earth
- 4 Reference voltage URef
- 5 UA (output signal)

### CHECKING THE LOW END OF THE SENSOR CURVE

Prerequisites:

- EGR system is functioning correctly.
- Air filter is clean.
- Maximum governed speed has been reached (as per emissions test data).



#### NOTE

If there is no special testing cable available, connect a measuring instrument with appropriate measuring tips to the terminals (rear side of plug). Do not puncture the cables!

- Turn on the ignition.
- With the engine off, measure the output voltage between pin 5 and pin 3.

If the still-air output voltage is  $1.00 \pm 0.02$  volts, the air mass sensor is almost always functioning correctly.

If there is a risk that the measurement could be falsified by air flows (wind), close both ends of the measuring tube using suitable means.

If the output voltage is outside this tolerance, you should replace the air mass sensor.

### CHECKING REACTION

If a value of 1 volt is achieved, blow gently into the air mass sensor.

The voltage value should now rise with the force at which you are blowing. If this does not happen, the sensor is defective and must be replaced.

### MEASURING UNDER LOAD

- Start the engine.  
Set-point value (engine idling at operating temperature): 1.2 – 1.6 volts
- Increase the engine speed (burst of throttle) until the maximum governed speed is reached.  
You should achieve signal voltages of 3.8 to 4.4 volts.

The air mass sensor delivers a measurable voltage of around 1.0 to 4.4 volts between idling and full load.

Replace the sensor if this does not happen.



Do not connect or disconnect any plug-in connections when the ignition is turned on. The peak stresses that arise as a result can destroy the electronic components.



#### NOTE

Never use compressed air to blow out the air mass sensor. This may destroy the sensor.

