

154

TECHNICAL REPORT

Cylinder head cover gasket
assembly 11121600



01 introduction

It is important to correctly fit the cylinder head gasket 11121600, which is mainly fitted on PSA 16-valve engines, to **ensure the tightness** of the cylinder head cover.

Improper fitting can cause breakage or deformation of the gasket, which could cause **oil leaks**, compromising engine performance and reliability.



Cover gasket 11121600

02 cause of failure

This type of gasket combines two types of plastic:

1) A **rigid PA plastic**, which provides the rigid structure of the gasket.

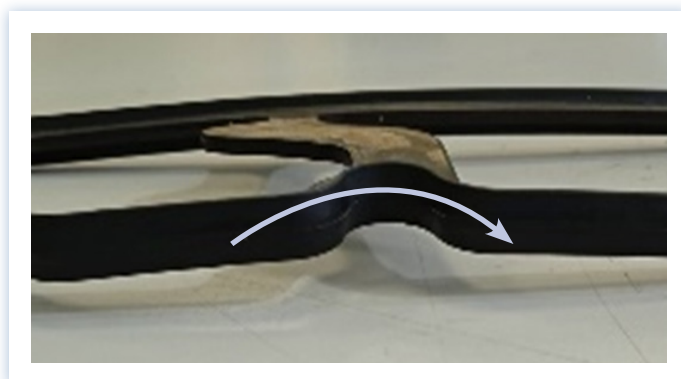
2) An **ACM elastomer material**, which is responsible for sealing the surface.

If the rigid material is over-tightened, it can become convoluted, causing the **gasket to deform** and, at the same time, cause breakages at its most critical points. This causes a poor seal in the elastomer and, therefore, **oil leaks**.



Cylinder head cover OEM: 0248.S0

Possible faults



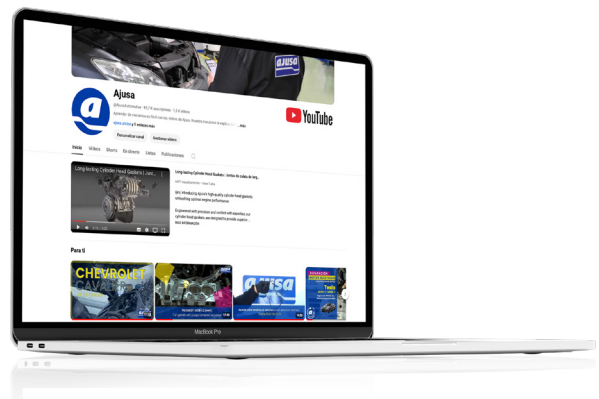
03 preliminary considerations

Before assembling the board, it is important to take into account a series of considerations.

01 | Check that the application is correct . We must **verify the compatibility** of the gasket with the cover and engine of the vehicle where it will be mounted. To do this, consult our **online catalogue**.

02 | Checking the cylinder head cover and cylinder head. Before installing the new gasket, it is important to **check that the contact surfaces** are in good condition, without deformations or cracks.

03 | Ceaning the mating surfaces. It is important to **remove any residue** from the old gasket, dirt and oil before fitting the new gasket.



Scan the QR code and access the complete assembly tutorial video on our **YouTube channel**.
If you have any questions, write in comments!



04 assembly

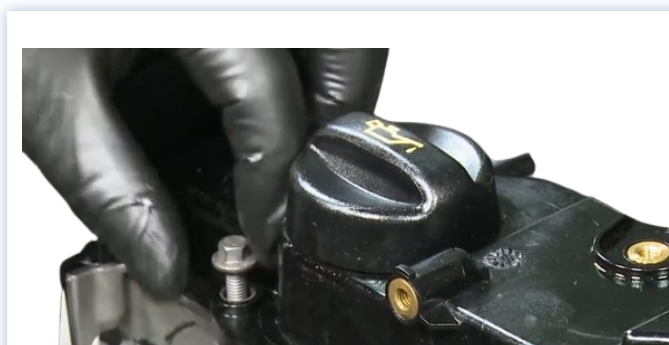
Below are a series of steps to carry out the correct assembly of the cover gasket:



01 | Align and place the gasket in its housing on the cover using the tabs



02 | Carefully place the cover on the engine. No sealant should be applied.



03 | Place the bolts and tighten them crosswise to 13 Nm, following the sequence in the image above.